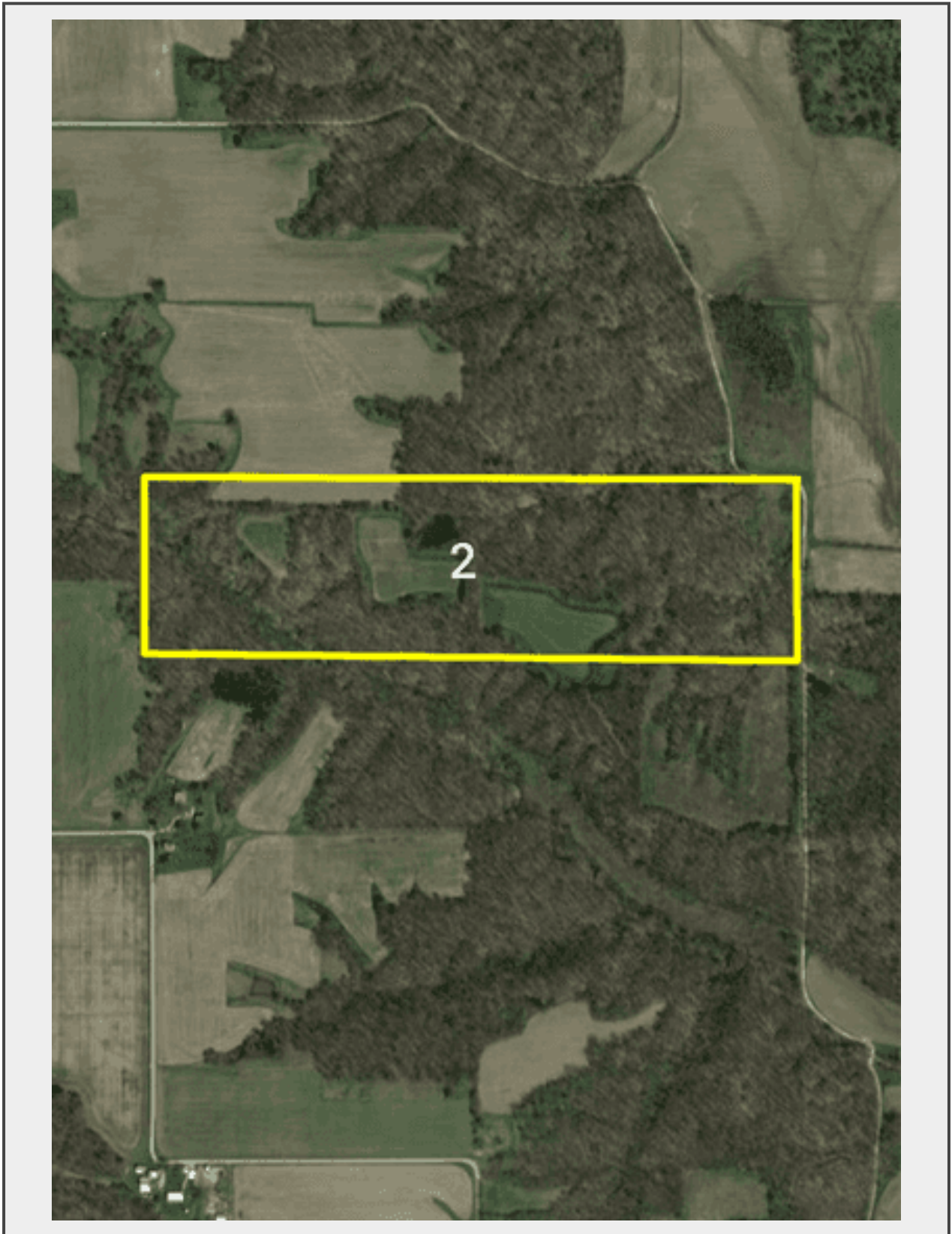


Sale Name: 106 + or - Acre Jasper County Land Auction

LOT 2 - Tract 2: 40 + or – Acres, .56 + or - acres, 7 acres food plots remainder wooded, incredible hunting land. CRP payment is \$111.60 per acre CP2 expires Oct. 2030. Located in Sec 3 & 4 Wade NW Township, Jasper County, IL



Description

Tract 2: 40 + or – Acres, .56 CRP CP2 + or - acres, 7 acres food plots remainder wooded, incredible hunting land. CRP payment is \$111.60 per acre CP2 expires Oct. 2030. Located in Sec 3 & 4 Wade NW Township, Jasper County, IL

CRP acreage is estimated from the auction company. The USDA will measure the exact acres of CRP for the new owners. If new owners terminate CRP acres, they will be responsible for paying back the USDA. CRP payment is \$273.93 per acre on CP22 expires Oct 2037 and \$111.60 per acre on CP2 expires Oct 2030. Sellers will pay 2023 taxes due 2024 on tract 1. Tract 2, 3, and 4 will be prorated to date of closing. USDA CRP payments will be prorated to date of closing.

Quantity: 1



<https://www.bidschmid.com/>