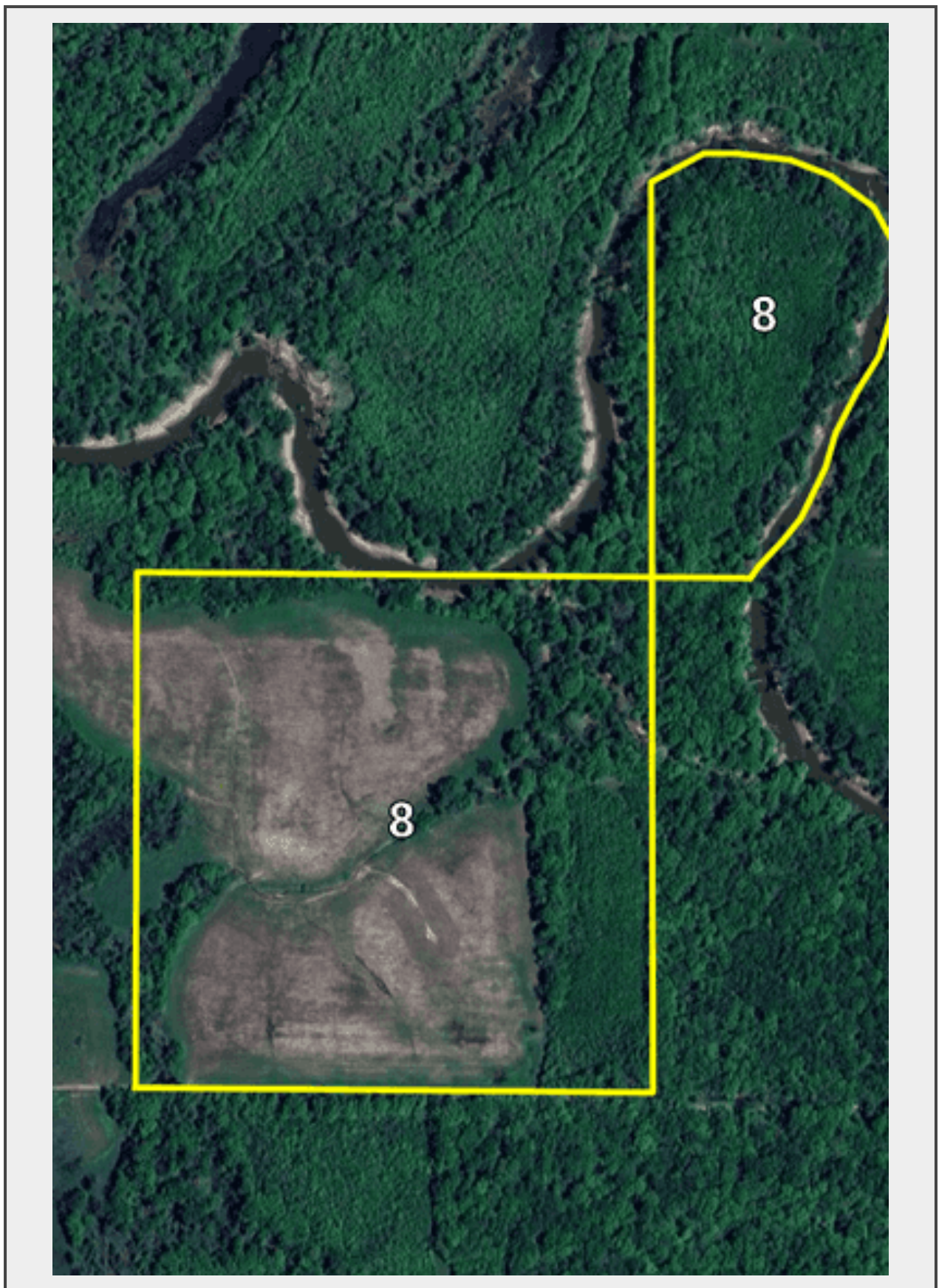


Sale Name: 597.24+ or – Acre Online Only Land Auction (Clay County IL) FARMLAND & HUNTING LAND

LOT 8 - Tract 8 · 51.2 + or – acres 41.2 + or – acres CRP CP31 w/annual payment of \$194/acre expires 9/30/2035, approx 10 acres wooded along the Wabash River, located in Sec 5 Stanford Township N. Clay County, IL parcel #1105-400-008 part of that parcel.



Description

Tract 8 • 51.2 + or – acres 41.2 + or – acres CRP CP31 w/annual payment of \$194/acre expires 9/30/2035, approx 10 acres wooded along the Wabash River, located in Sec 5 Stanford Township N. Clay County, IL parcel #1105-400-008 part of that parcel.

Quantity: 1



<https://www.bidschmid.com/>