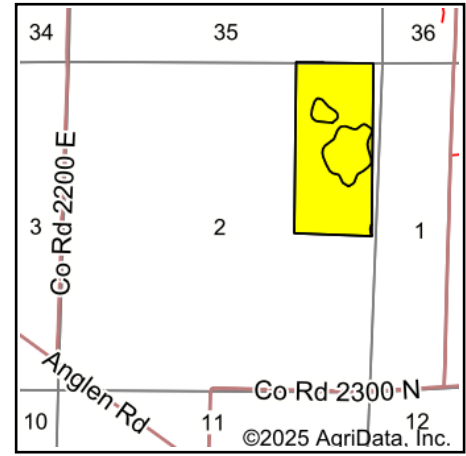
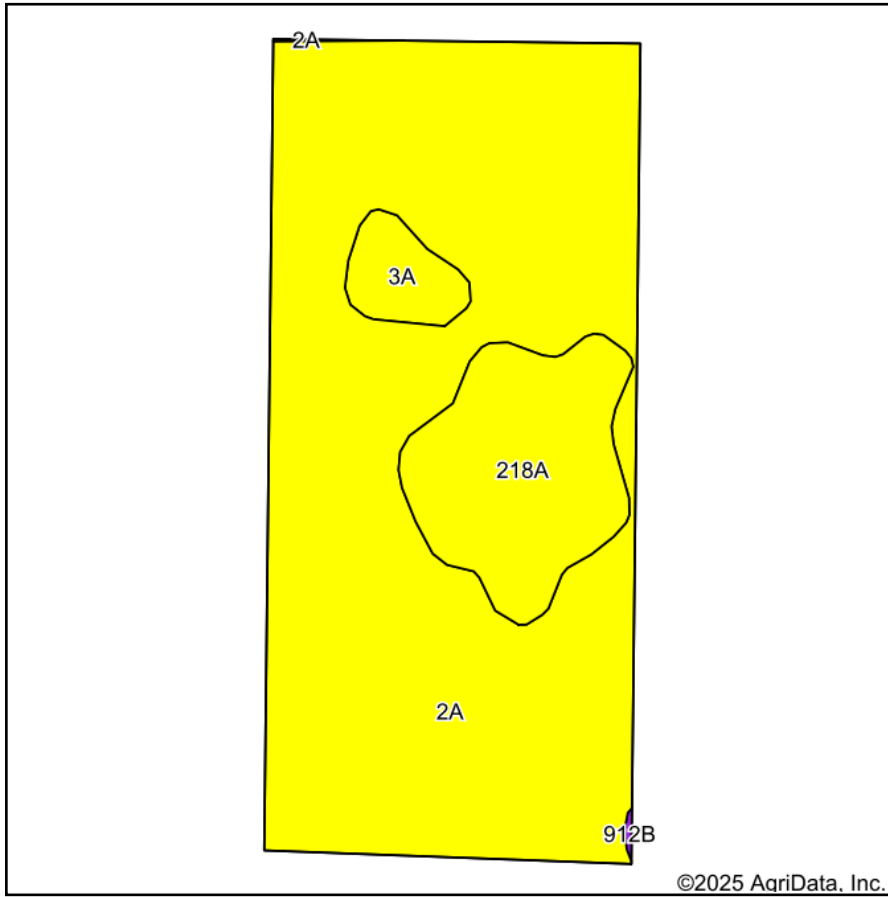


# Soils Map



State: **Illinois**  
 County: **Marion**  
 Location: **2-4N-4E**  
 Township: **Meacham**  
 Acres: **90.2**  
 Date: **11/1/2025**

**SCHMID**  
**AUCTION**  
(217) 857-1507 • (618) 308-1551  
 www.BidSchmid.com

Maps Provided By:

**surety**  
CUSTOMIZED ONLINE MAPPING  
 © AgriData, Inc. 2023 www.AgriDataInc.com



Area Symbol: IL051, Soil Area Version: 21  
 Area Symbol: IL121, Soil Area Version: 22

Code	Soil Description	Acres	Percent of field	Il. State Productivity Index Legend	Restrictive Layer	Soil Drainage	*Subsoil rooting a	*Corn Bu/A	*Soybeans Bu/A	*Wheat Bu/A	*Oats Bu/A b	*Grass-legume e hay, T/A	*Crop productivity index for optimum management	*n NCCPI Overall
2A	Cisne silt loam, 0 to 2 percent slopes	73.49	81.5%		1.4ft. (Abrupt textural change)	Poorly drained	FAV	149	46	59	0	5.00	109	79
218A	Newberry silt loam, 0 to 2 percent slopes	13.66	15.1%		> 6.5ft.	Poorly drained	FAV	155	48	60	0	5.00	114	86
3A	Hoyleton silt loam, 0 to 2 percent slopes	2.97	3.3%		0.9ft. (Abrupt textural change)	Somewhat poorly drained	FAV	146	46	58	0	5.00	108	78
**912B	Hoyleton-Darmstadt silt loams, 2 to 5 percent slopes	0.08	0.1%		0.9ft. (Abrupt textural change)	Somewhat poorly drained	FAV	**133	**44	**51	0	**5.00	**100	77
Weighted Average								149.8	46.3	59.1	*-	5	109.7	*n 80

**Table: Optimum Crop Productivity Ratings for Illinois Soil EFOTG are sourced from Bulletin 811 calculated Map Unit Base Yield Indices, and adjusted (Adj) for slope, erosion, and surface texture.** Publication Date: 02-08-2023

Crop yields and productivity (B811 EFOTG) are maintained at the following USDA web site: 2023 Illinois Soil Productivity and Yield Indices:  
<https://efotg.sc.egov.usda.gov/#!/state/IL/documents/section=2&folder=52809>

\* The flood/pond factor has been removed for B811 indexes and yields.

\*\* Base indexes from Bulletin 811 adjusted for slope, erosion, and surface texture according to the IL Soils EFOTG

**b** Soils in the southern region were not rated for oats and are shown with a zero "0".

**e** Soils in the well drained group were not rated for grass-legume and are shown with a zero "0".

\*n: The aggregation method is "Weighted Average using all components"