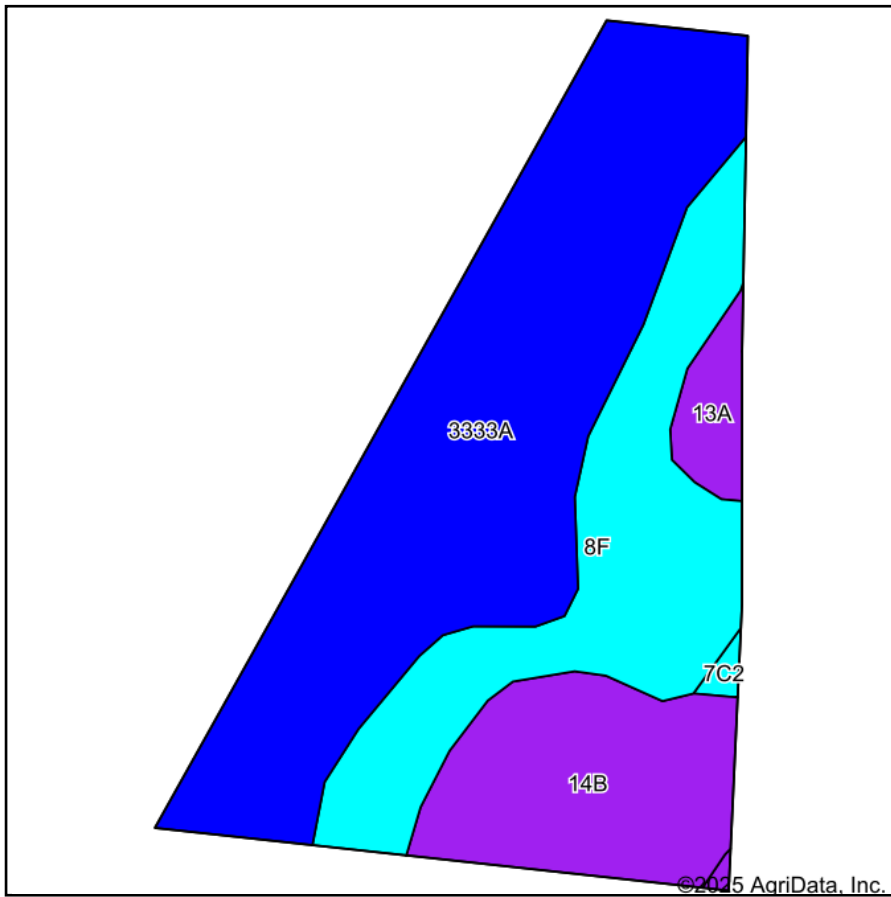
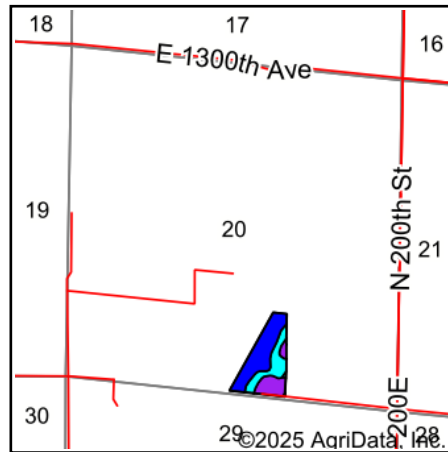


# Soils Map



Soils data provided by USDA and NRCS.



State: **Illinois**  
County: **Jasper**  
Location: **20-7N-8E**  
Township: **North Muddy**  
Acres: **17.2**  
Date: **9/16/2025**

**SCHMID**  
**AUCTION**

(217) 857-1507 • 618-308-1551  
[www.BidSchmid.com](http://www.BidSchmid.com)

Maps Provided By:



Area Symbol: IL079, Soil Area Version: 21

Code	Soil Description	Acres	Percent of field	II. State Productivity Index Legend	Restrictive Layer	Soil Drainage	*Subsoil rooting <b>a</b>	*Corn Bu/A	*Soybeans Bu/A	*Wheat Bu/A	*Oats Bu/A <b>b</b>	*Grass-legume hay, T/A <b>c</b>	*Crop productivity index for optimum management	*n NCCPI Overall
**3333A	Wakeland silt loam, 0 to 2 percent slopes, frequently flooded	8.96	52.1%	1	> 6.5ft.	Somewhat poorly drained	FAV	**174	**56	**68	**86	**5.56	**128	7
**8F	Hickory silt loam, 18 to 35 percent slopes	4.52	26.3%	2	> 6.5ft.	Well drained	FAV	**89	**30	**36	**41	**3.00	**68	2
**14B	Ava silt loam, 2 to 5 percent slopes	3.03	17.6%	3	2.8ft. (Fragipan)	Moderately well drained	UNF	**134	**44	**54	0	**3.00	**99	6
13A	Bluford silt loam, 0 to 2 percent slopes	0.60	3.5%	4	1.6ft. (Abrupt textural change)	Somewhat poorly drained	FAV	136	44	55	0	3.00	101	6
**7C2	Atlas silt loam, 5 to 10 percent slopes, eroded	0.09	0.5%	5	> 6.5ft.	Somewhat poorly drained	UNF	**104	**36	**41	**48	**3.00	**80	7
Weighted Average								142.9	46.5	56.5	55.8	4.3	105.9	*n 61.

Soils data provided by USDA and NRCS. Soils data provided by University of Illinois at Champaign-Urbana.

**Table: Optimum Crop Productivity Ratings for Illinois Soil EFOTG are sourced from Bulletin 811 calculated Map Unit Base Yield Indices, and adjusted (Adj) for slope, erosion, and surface texture.** Publication Date: 01-28-2025

Crop yields and productivity (B811 EFOTG) are maintained at the following USDA web site: 2023 Illinois Soil Productivity and Yield Indices:

<https://efotg.sc.egov.usda.gov/#/state/IL/documents/section=2&folder=52809>

\* The flood/pond factor has been removed for B811 indexes and yields.

\*\* Base indexes from Bulletin 811 adjusted for slope, erosion, and surface texture according to the II. Soils EFOTG

**b** Soils in the southern region were not rated for oats and are shown with a zero "0".

**e** Soils in the well drained group were not rated for grass-legume and are shown with a zero "0".

\*n: The aggregation method is "Weighted Average using all components"