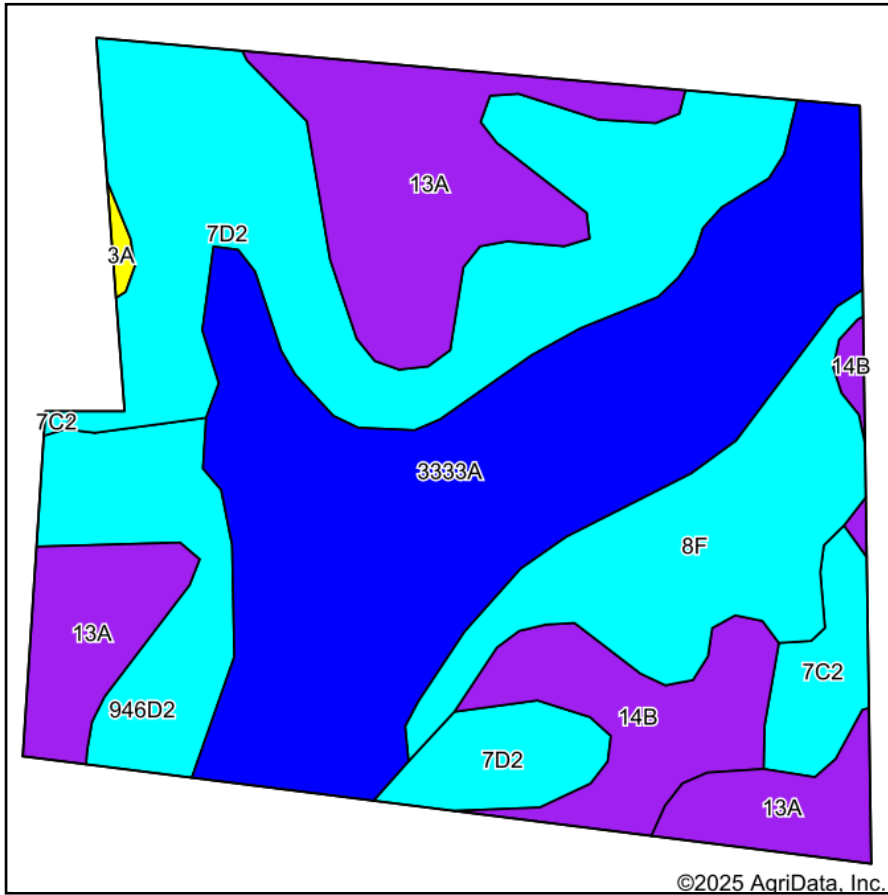
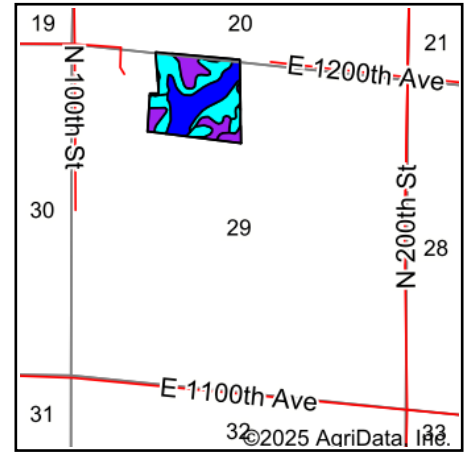


Soils Map



Soils data provided by USDA and NRCS.



State: **Illinois**
 County: **Jasper**
 Location: **29-7N-8E**
 Township: **North Muddy**
 Acres: **41.45**
 Date: **9/16/2025**

SCHMID AUCTION
 (217) 857-1507 • 618-308-1551
 www.BidSchmid.com

Maps Provided By:

surety
 CUSTOMIZED ONLINE MAPPING
 © AgriData, Inc. 2023 www.AgriDataInc.com



Area Symbol: IL079, Soil Area Version: 21

Code	Soil Description	Acres	Percent of field	Il. State Productivity Index Legend	Restrictive Layer	Soil Drainage	*Subsoil rooting ^a	*Corn Bu/A	*Soybeans Bu/A	*Wheat Bu/A	*Oats Bu/A ^b	*Grass-legume hay, T/A	*Crop productivity index for optimum management	*n NCCPI Overall
**3333A	Wakeland silt loam, 0 to 2 percent slopes, frequently flooded	12.72	30.7%		> 6.5ft.	Somewhat poorly drained	FAV	**174	**56	**68	**86	**5.56	**128	7
**7D2	Atlas silt loam, 10 to 18 percent slopes, eroded	10.12	24.4%		> 6.5ft.	Somewhat poorly drained	UNF	**96	**34	**38	**44	**3.00	**74	6
13A	Bluford silt loam, 0 to 2 percent slopes	7.09	17.1%		1.6ft. (Abrupt textural change)	Somewhat poorly drained	FAV	136	44	55	0	3.00	101	6
**8F	Hickory silt loam, 18 to 35 percent slopes	4.66	11.2%		> 6.5ft.	Well drained	FAV	**89	**30	**36	**41	**3.00	**68	2
**946D2	Hickory-Atlas silt loams, 10 to 18 percent slopes, eroded	2.84	6.9%		3.2ft. (Densic material)	Well drained	FAV	**104	**36	**41	**49	**4.00	**79	5

Soils data provided by USDA and NRCS. Soils data provided by University of Illinois at Champaign-Urbana.

Code	Soil Description	Acres	Percent of field	Il. State Productivity Index Legend	Restrictive Layer	Soil Drainage	*Subsoil rooting a	*Corn Bu/A	*Soybeans Bu/A	*Wheat Bu/A	*Oats Bu/A b	*Grass-legume e hay, T/A	*Crop productivity index for optimum management	*n NCCPI Overall
**14B	Ava silt loam, 2 to 5 percent slopes	2.73	6.6%		2.8ft. (Fragipan)	Moderately well drained	UNF	**134	**44	**54	0	**3.00	**99	6
**7C2	Atlas silt loam, 5 to 10 percent slopes, eroded	1.18	2.8%		> 6.5ft.	Somewhat poorly drained	UNF	**104	**36	**41	**48	**3.00	**80	7
3A	Hoyleton silt loam, 0 to 2 percent slopes	0.11	0.3%		0.9ft. (Abrupt textural change)	Somewhat poorly drained	FAV	146	46	58	0	5.00	108	7
Weighted Average								129.4	42.9	51.3	46.5	3.9	96.8	*n 64

Table: Optimum Crop Productivity Ratings for Illinois Soil EFOTG are sourced from Bulletin 811 calculated Map Unit Base Yield Indices, and adjusted (Adj) for slope, erosion, and surface texture. Publication Date: 01-28-2025

Crop yields and productivity (B811 EFOTG) are maintained at the following USDA web site: 2023 Illinois Soil Productivity and Yield Indices: <https://efotg.sc.egov.usda.gov/#/state/IL/documents/section=2&folder=52809>

* The flood/pond factor has been removed for B811 indexes and yields.

** Base indexes from Bulletin 811 adjusted for slope, erosion, and surface texture according to the Il. Soils EFOTG

b Soils in the southern region were not rated for oats and are shown with a zero "0".

e Soils in the well drained group were not rated for grass-legume and are shown with a zero "0".

*n: The aggregation method is "Weighted Average using all components"