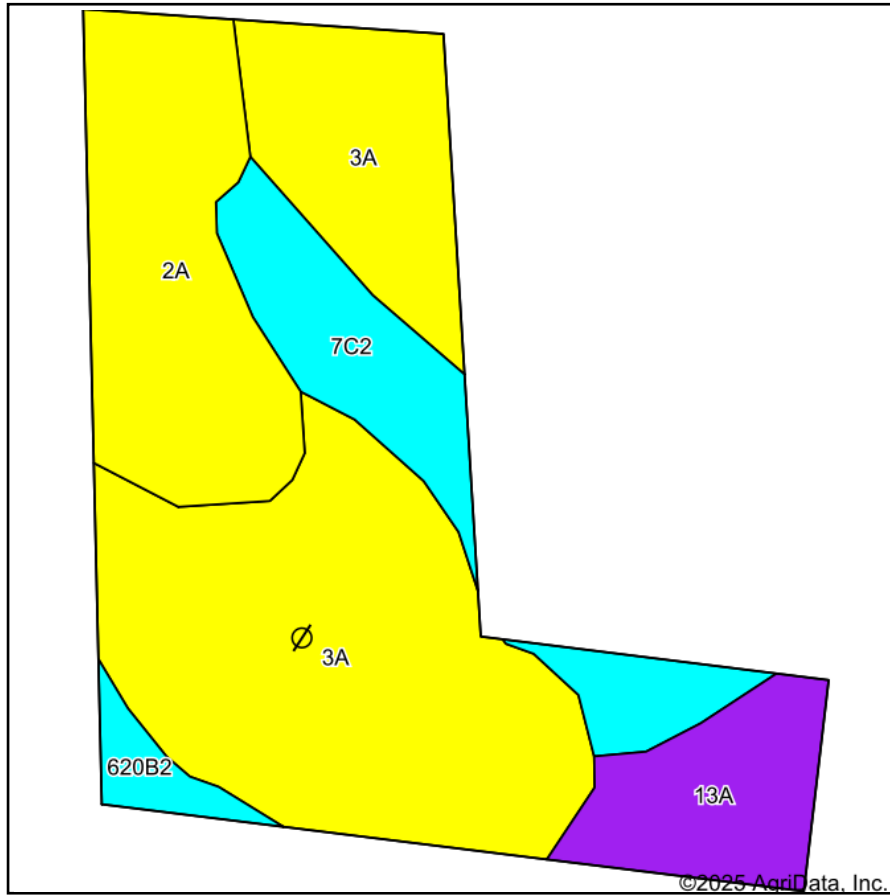
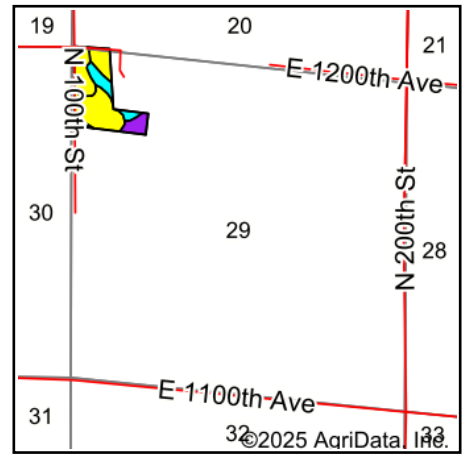


Soils Map



Soils data provided by USDA and NRCS.



State: **Illinois**
 County: **Jasper**
 Location: **29-7N-8E**
 Township: **North Muddy**
 Acres: **21.82**
 Date: **9/16/2025**

SCHMID AUCTION
 (217) 857-1507 • 618-308-1551
 www.BioSchmid.com

Maps Provided By:
surety
 CUSTOMIZED ONLINE MAPPING
 © AgriData, Inc. 2023 www.AgriDataInc.com



Area Symbol: IL079, Soil Area Version: 21

Code	Soil Description	Acres	Percent of field	Il. State Productivity Index Legend	Restrictive Layer	Soil Drainage	*Subsoil rooting a	*Corn Bu/A	*Soybeans Bu/A	*Wheat Bu/A	*Oats Bu/A b	*Grass-legume hay, T/A	*Crop productivity index for optimum management	*n NCCPI Overall
3A	Hoyleton silt loam, 0 to 2 percent slopes	11.33	52.0%		0.9ft. (Abrupt textural change)	Somewhat poorly drained	FAV	146	46	58	0	5.00	108	78
2A	Cisne silt loam, 0 to 2 percent slopes	4.70	21.5%		1.4ft. (Abrupt textural change)	Poorly drained	FAV	149	46	59	0	5.00	109	79
**7C2	Atlas silt loam, 5 to 10 percent slopes, eroded	3.02	13.8%		> 6.5ft.	Somewhat poorly drained	UNF	**104	**36	**41	**48	**3.00	**80	71
13A	Bluford silt loam, 0 to 2 percent slopes	2.21	10.1%		1.6ft. (Abrupt textural change)	Somewhat poorly drained	FAV	136	44	55	0	3.00	101	66
**620B2	Darmstadt silt loam, 2 to 5 percent slopes, eroded	0.56	2.6%		1.7ft. (Natric)	Somewhat poorly drained	UNF	**109	**40	**40	0	**3.00	**86	60
Weighted Average								138.9	44.3	55.1	6.6	4.5	103.1	*n 75.1

Soils data provided by USDA and NRCS. Soils data provided by University of Illinois at Champaign-Urbana.

Table: Optimum Crop Productivity Ratings for Illinois Soil EFOTG are sourced from Bulletin 811 calculated Map Unit Base Yield Indices, and adjusted (Adj) for slope, erosion, and surface texture. Publication Date: 01-28-2025

Crop yields and productivity (B811 EFOTG) are maintained at the following USDA web site: 2023 Illinois Soil Productivity and Yield Indices: <https://efotg.sc.egov.usda.gov/#/state/IL/documents/section=2&folder=52809>

* The flood/pond factor has been removed for B811 indexes and yields.

** Base indexes from Bulletin 811 adjusted for slope, erosion, and surface texture according to the II. Soils EFOTG

b Soils in the southern region were not rated for oats and are shown with a zero "0".

e Soils in the well drained group were not rated for grass-legume and are shown with a zero "0".

*n: The aggregation method is "Weighted Average using all components"

	Symbol	Name	Description
Ø	SOD	Sodic spot	An area where the surface layer has a sodium adsorption ratio that is at least 10 more than the surface layer of the named soils in the surrounding map unit which have a sodium adsorption ratio of 5 or less. Typically .5 to 3 acres.